

Leiva, Benjamin; Rubio-Varas, Mar

Article

The energy and gross domestic product causality nexus in Latin America 1900-2010

International Journal of Energy Economics and Policy

Provided in Cooperation with:

International Journal of Energy Economics and Policy (IJEEP)

Reference: Leiva, Benjamin/Rubio-Varas, Mar (2020). The energy and gross domestic product causality nexus in Latin America 1900-2010. In: International Journal of Energy Economics and Policy 10 (1), S. 423 - 435.

<https://www.econjournals.com/index.php/ijEEP/article/download/8670/4807>.

doi:10.32479/ijEEP.8670.

This Version is available at:

<http://hdl.handle.net/11159/8250>

Kontakt/Contact

ZBW – Leibniz-Informationszentrum Wirtschaft/Leibniz Information Centre for Economics
Düsternbrooker Weg 120
24105 Kiel (Germany)
E-Mail: [rights\[at\]zbw.eu](mailto:rights[at]zbw.eu)
<https://www.zbw.eu/>

Standard-Nutzungsbedingungen:

Dieses Dokument darf zu eigenen wissenschaftlichen Zwecken und zum Privatgebrauch gespeichert und kopiert werden. Sie dürfen dieses Dokument nicht für öffentliche oder kommerzielle Zwecke vervielfältigen, öffentlich ausstellen, aufführen, vertreiben oder anderweitig nutzen. Sofern für das Dokument eine Open-Content-Lizenz verwendet wurde, so gelten abweichend von diesen Nutzungsbedingungen die in der Lizenz gewährten Nutzungsrechte. Alle auf diesem Vorblatt angegebenen Informationen einschließlich der Rechteinformationen (z.B. Nennung einer Creative Commons Lizenz) wurden automatisch generiert und müssen durch Nutzer:innen vor einer Nachnutzung sorgfältig überprüft werden. Die Lizenzangaben stammen aus Publikationsmetadaten und können Fehler oder Ungenauigkeiten enthalten.

Terms of use:

This document may be saved and copied for your personal and scholarly purposes. You are not to copy it for public or commercial purposes, to exhibit the document in public, to perform, distribute or otherwise use the document in public. If the document is made available under a Creative Commons Licence you may exercise further usage rights as specified in the licence. All information provided on this publication cover sheet, including copyright details (e.g. indication of a Creative Commons license), was automatically generated and must be carefully reviewed by users prior to reuse. The license information is derived from publication metadata and may contain errors or inaccuracies.



<https://savearchive.zbw.eu/terms-of-use>



The Energy and Gross Domestic Product Causality Nexus in Latin America 1900-2010

Benjamin Leiva^{1,2}, Mar Rubio-Varas^{3*}

¹OES, Universidad del Valle de Guatemala, Guatemala, ²CAES, University of Georgia, Athens, U.S.A., ³INARBE, Universidad Publica de Navarra, Spain. *Email: mar.rubio@unavarra.es

Received: 05 August 2019

Accepted: 01 November 2019

DOI: <https://doi.org/10.32479/ijee.8670>

ABSTRACT

A better understanding of the relationship between energy consumption and economic growth is important for the less developed regions of the world such as Africa or Latin America, which future might be compromised by the imposition of the transition to a lower carbon economy. Studies on the energy-GDP nexus for Latin America have been few and bounded to short periods. We fill this gap by searching for causal paths between energy and GDP for 20 Latin American countries using a newly compiled dataset spanning the 20th century. Our main identification strategy is based on super exogeneity, which we complement with Granger tests, Toda and Yamamoto and enrich by controlling for structural breaks and the False Discovery Rate. The results highlight the inexistence of a homogeneous relation between energy and GDP in highly heterogeneous spatial and temporal dimensions, and thus the need to enhance our theoretical understanding of this relation. The policy implication is that designing and implementing energy policies coming from a single methodological approach and based on aggregated results should be avoided.

Keywords: Energy, Gross Domestic Product, Causality

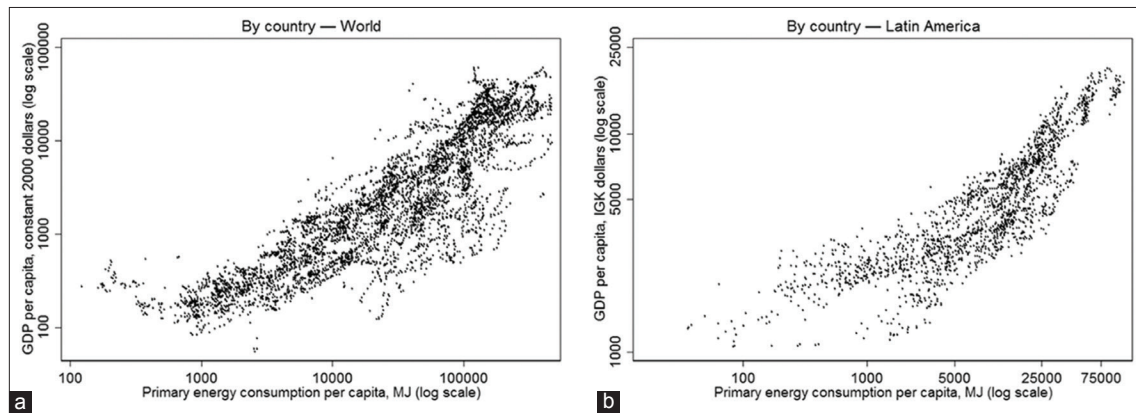
JEL Classifications: Q2, Q4

1. INTRODUCTION

Studies on the casual relation between energy consumption and GPD have yielded mixed results, despite the correlation between per capita energy consumption and GDP (Figure 1), its relation to economic development (Beaudreau, 2005; Cleveland et al., 1984; Weissenbacher, 2009; White, 1943) and the theoretical arguments that expansion of energy use underlies GDP growth. Understanding the relationship between energy use and economic growth has become a critical issue to resolve future world-scale challenges, particularly because the current fossil-reliant global energy system accounts for roughly 60% of total global greenhouse emissions. A better understanding of the relationship between energy consumption and economic growth is even more important for the less developed regions of the world, which future might be compromised by the imposition of the transition to a lower carbon economy. Despite the large reserves of oil and coal held in

the region, Latin America is (and has always been) a low energy consuming region, with the second smallest primary energy consumption per capita in the world after Africa. Thus, a better understanding of the relationship between energy consumption and economic growth in Latin America is a key question.

In a survey of the vast literature studying the energy-GDP nexus, Payne (2010) covers 101 studies and finds that results are almost evenly split between the four possible hypotheses (unidirectional causal path from GDP to energy, energy to GDP, bidirectional causation, and no causation), while Ozturk (2010) concludes from an overview of roughly 130 studies that “there is no consensus neither on the existence nor on the direction of causality between these variables.” These heterogeneous outcomes have been mostly associated with differences in countries’ economic structures, developmental stages, idiosyncrasies, and climate, and with the use of different econometric techniques, time spans,

Figure 1: (a and b) World and Latin America GDP versus energy consumption per capita by country 1900-2010

Sources: For energy see text. Maddison Project (2018) for GDP

and presence of biases (Apergis and Payne, 2009; Payne, 2010; Rodriguez-Caballero and Ventosa-Santaularia, 2016).

The meta-analyses on this literature has identified an array of paths for future research. Based on 51 studies, Menegaki (2014) argues that future work should focus on developing countries, more advanced econometrics, and multivariate analysis. Moreover, based on 158 studies Kalimeris et al. (2014) call for using energy prices and elasticities, quality adjusted energy measures, and grouping analysis by countries with similar patterns of energy consumption. Lastly, based on 72 studies, Bruns et al. (2014) emphasize the need for longer time series, quality adjusted energy measures, and better theory.

This paper contributes to the energy-GDP nexus literature in four ways. First, we use a new dataset that spans the twentieth century and covers 20 Latin American countries. The existing studies on this region (and the majority of the literature) suffer from the use of relatively short time periods, as they usually start after 1970 given data availability and sometimes contain no more than 30 observations. This raises important concerns about sampling variability (Stern and Enflo, 2013) and can pose significant problems to time series estimation due to the asymptotic nature of all relevant statistics (Smyth and Narayan, 2015). Although these problems have been addressed with panel data (Apergis and Payne, 2009; Herreras et al., 2013), short time-spans inhibit the modeling of parameter heterogeneity, which has been proven important in practice (Baltagi and Griffin, 1997). To our knowledge, only Stern and Enflo (Stern and Enflo, 2013), Csereklyei et al. (Csereklyei et al., 2016), and Vaona (Vaona, 2012) use time series comparable to ours, but for other nations.

Second, we study a region that has been historically underrepresented in the energy-GDP nexus literature. Of the 101 papers surveyed by Payne (2010), only 11 include at least one Latin-American country. Similarly, of the 61 papers surveyed by Ozturk (2010), just 4 include at least one Latin-American country. Neither survey contains a paper that includes the entire region.

Third, we follow the identification strategy in Rodriguez-Caballero and Ventosa-Santaularia, (2016) which controls for structural breaks and search for evidence of superexogeneity (Engle et al.,

1983). The authors argue that evidence of superexogeneity is valuable to establish causal links and to assess if inferences can be used for policy-making. This strategy differs from the standard approach to infer causality in the energy-GDP nexus literature, which is based on bivariate (Kraft and Kraft, 1978) and multivariate (Stern, 1993) Granger tests, which have been modified to account for integration (Wolde-Rufael, 2004), cointegration (Masih and Masih, 1996), and exploit panel data availability (Lee, 2005) and regime shifts (Kocaaslan, 2013). These approaches, although increasingly refined and sophisticated, suffer from the fact that Granger-causality does not imply any meaningful sense of causality in non-stationary settings (Hendry, 2004).

Fourth, we take into account multiple hypotheses testing controlling for the False Discovery Rate (FDR) (Benjamini and Hochberg, 1995). To our understanding, this issue has been broadly neglected by the energy-GDP nexus literature. For example, Chontanawat et al. (2008) and Apergis and Tang (2013) study over 100 and 85 countries respectively, perform hundreds of tests, yet fail to mention any multiple inference procedure (Narayan, 2016).

The rest of the paper is organized as follows. Section 2 presents the data and details the methods used to analyze it. Section 3 presents our results. Section 4 provides a discussion on our results and section 5 concludes.

2. MATERIALS AND METHODS

2.1. Data

Our dataset covers GDP (Maddison Project, 2018) and modern energy use for 20 Latin American countries from 1900 to 2010. The series on energy use contains the annual modern energy consumption (coal, oil, gas, and primary electricity). It has been built from pre-existing compilations by energy historians which have been linked to internationally available statistics after 1970. The series were originally constructed by Rubio et al. (2010) for 1900-1930, and later expanded by Rubio and Folchi (2012) to cover 1856-1960. Updates to coal consumption from Yañez et al. (2013) and on hydroelectricity by (Rubio and Tafunell (2014)) are included. Missing data from the previous sources after 1950 was obtained from the United Nations (UN/WES) (1976) until 1971. After 1971 the series are match with International Energy Agency (2013) data, excluding the biofuels

and waste estimates from the IEA's totals in order to keep the data consistent across the entire period. Data are expressed in terajoules (TJ). Details can be found in the supplementary materials.

The box includes 1st to 3rd quartiles with the vertical line at the median value. The whiskers go from the upper to the lower adjacent values. Sorted by the median value of energy consumption.

The context of the data and the data itself must be taken into consideration when looking for evidence of the energy-GDP

nexus in Latin America. Contrary to the world as a whole, in most Latin American countries energy consumption outpaced economic growth over the century (Figure 2). In fact, many countries have had impressive energy consumption growth rates over time, with averages for the period under study in Brazil, Colombia, Mexico, and Venezuela higher than their standard deviations. From 1950 to 2000 alone, the entire region's energy consumption increased roughly 12-fold while its GDP only grew about 9-fold. While energy consumption has tended to converge in the region over the past century GDP levels have not (Figure 3).

Figure 2: Descriptive statistics of GDP and primary energy consumption Latin America 1900-2010

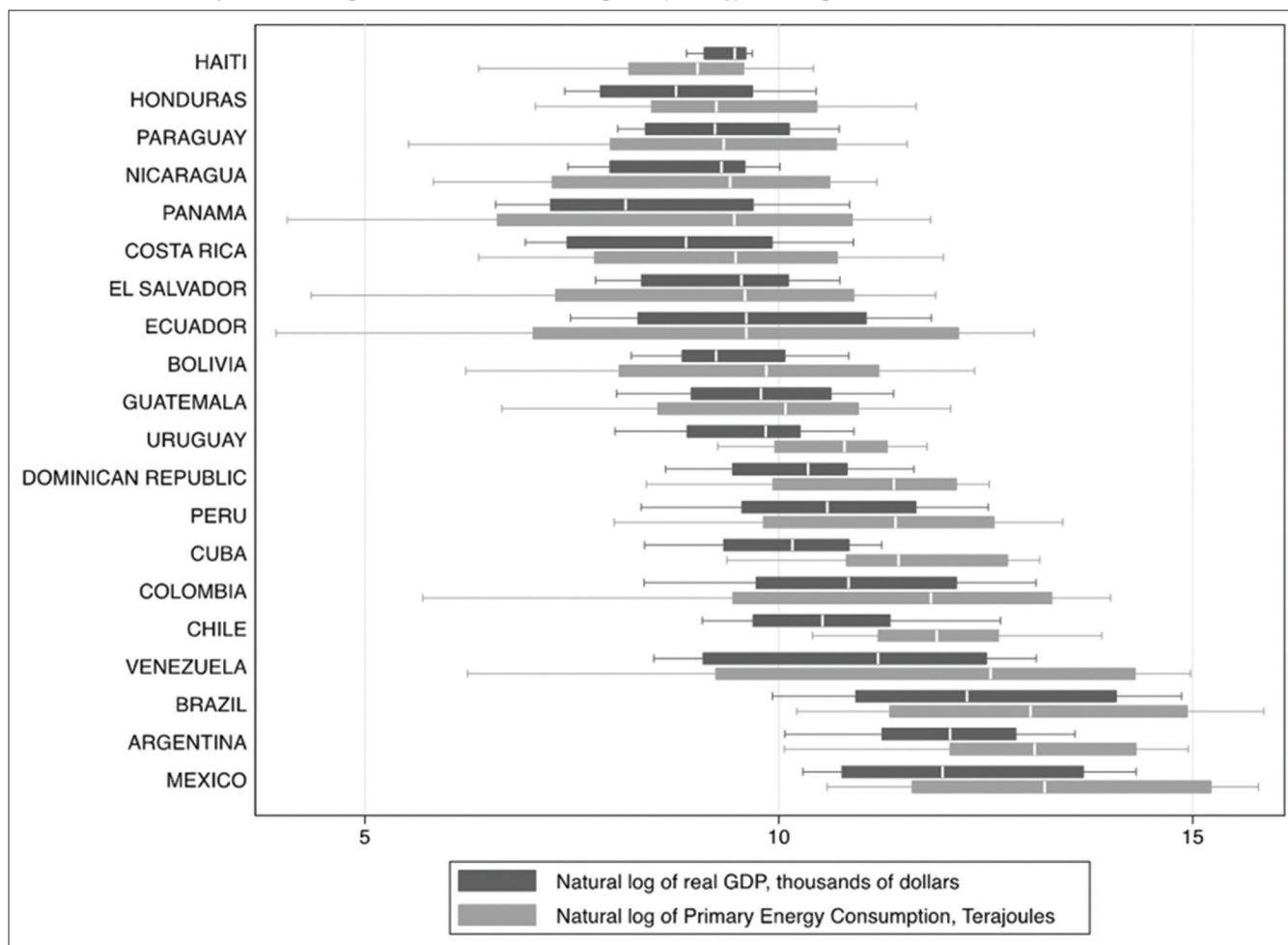


Figure 3: (a and b) Latin American trajectories in GDP and energy consumption (20th century)

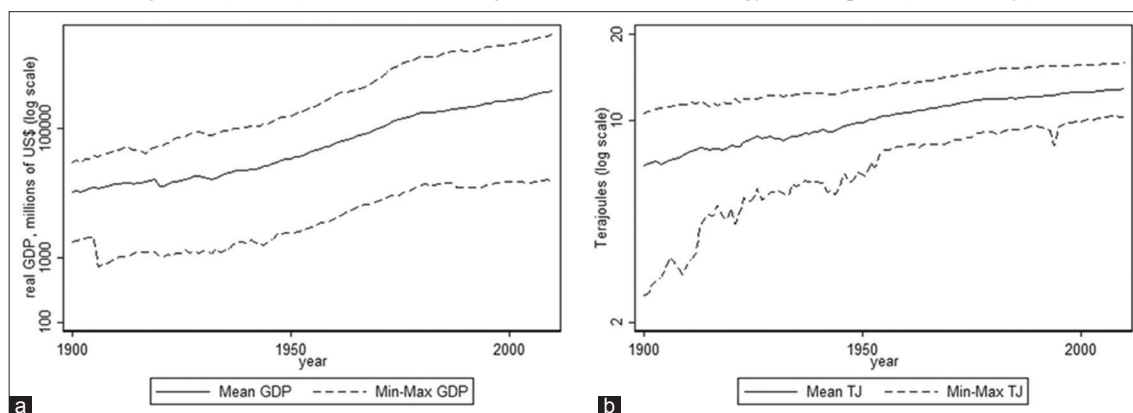


Table 1: Granger causality tests

| Country | $\delta_i, i=0 \forall i \in p$ | $\gamma_i, i=0 \forall i \in p$ | Country | $\delta_i, i=0 \forall i \in p$ | $\gamma_i, i=0 \forall i \in p$ |
|-------------|---------------------------------|---------------------------------|-----------|---------------------------------|---------------------------------|
| Argentina | 0.903 [0.903] | 0.000 [0.001] | Guatemala | 0.404 [0.491] | 0.600 [0.633] |
| Bolivia | 0.601 [0.633] | 0.014 [0.044] | Haiti | 0.529 [0.588] | 0.527 [0.588] |
| Brazil | 0.405 [0.491] | 0.031 [0.073] | Honduras | 0.005 [0.02] | 0.005 [0.02] |
| Chile | 0.020 [0.053] | 0.000 [0.001] | Mexico | 0.005 [0.02] | 0.001 [0.008] |
| Colombia | 0.449 [0.529] | 0.046 [0.103] | Nicaragua | 0.196 [0.314] | 0.000 [0.001] |
| Costa Rica | 0.020 [0.053] | 0.169 [0.282] | Panama | 0.279 [0.399] | 0.245 [0.363] |
| Cuba | 0.003 [0.018] | 0.138 [0.24] | Paraguay | 0.064 [0.128] | 0.007 [0.026] |
| Dom. Rep. | 0.386 [0.491] | 0.399 [0.491] | Peru | 0.836 [0.858] | 0.000 [0.001] |
| Ecuador | 0.395 [0.491] | 0.057 [0.12] | Uruguay | 0.106 [0.193] | 0.226 [0.348] |
| El Salvador | 0.093 [0.178] | 0.008 [0.027] | Venezuela | 0.021 [0.053] | 0.002 [0.014] |

Statistics are P-values. q-values in brackets

Own elaboration the supplementary materials for energy and Maddison Project (2018) for GDP.

The regional averages hide vast heterogeneity over space between countries and over time for the same country (Figure 2). Three countries (Argentina, Brazil and Mexico) concentrate the bulk of energy consumption and economic production in the region. These three countries account for up to 70% of the region's energy consumption and GDP over the twentieth century. Moreover, 90% of both indicators are accounted for by adding four more countries (Chile, Colombia, Uruguay and Venezuela). Thus, the remaining 13 countries share the remaining 10% of the region's energy consumption and economic output. Latin American heterogeneity across space can also be exemplified with per capita consumption: in 1890 a Chilean consumed on average about 370 times more energy than the average Guatemalan (Rubio et al., 2010), and in 2000, the average Mexican consumed over 250 times more energy than the average Haitian.

In addition to the heterogeneity between countries, the heterogeneity within countries over time is remarkable. While all experienced important increases in both GDP and energy use throughout the 20th century, some had particularly dramatic paths. For example, Venezuela passed from being a poor agrarian country in the 1900s to the second largest oil producer in the world by the 1950s, turning into one of the richest countries in the world by the 1960s, but then collapsing towards the end of the century.

Whereas these differences in space and time seem to correlate well with differences in GDP, as argued by Rubio et al. (2010), there is no theoretical reason to expect that a constant and identifiable relation should hold across such contrasting settings. As argued by Toman and Jemelkova (2003) and Yu and Choi (1985), lack of consistency in the relation between energy and GDP can be attributed not only to varying econometrics and omitted variables bias, but also to different structure and stages of economic

development, energy consumption patterns, and even climate conditions.

2.2. Methods

2.2.1. Integration

To study Granger-causality and super exogeneity we first determine the order of integration $I(d)$ of the series under analysis. As all series are growing (Table 1), they represent processes that are either trend stationary or that contain a unit root with drift (Elder and Kennedy, 2001). The alternative of a unit root with a deterministic trend implies an explosive data generating process, and thus is discarded. To discriminate between the two possible processes we use the Elliott et al. (1996) and Kwiatkowski et al. (1992) tests (hereafter DF-GLS and KPSS respectively). The DF-GLS test is a Dickey-Fuller type test that uses a fitting regression of the form:

$$\Delta y_t = \alpha + \gamma t + \beta y_{t-1} + \sum_{i=1}^k \delta_i y_{t-i} + \epsilon_t \quad (1)$$

Where the null hypothesis of a unit root with drift implies setting $\gamma = 0$ and testing $H_0: \beta = 0$, and ϵ_t represents a white noise error term. On another hand, the KPSS test uses a fitting regression of the form:

$$y_t = \gamma t + r_t + \epsilon_t \quad (2)$$

Where the null is trend stationarity, ϵ_t represents a white noise error term, and r_t a random walk.

Accounting for structural breaks is important as they can be mistaken for unit roots (Campos et al., 1996; Perron, 1989). Thus, we use the Zivot and Andrews (1992) and Perron (1997) tests (hereafter ZA and P97 respectively). Model C of the ZA test, which is based on a Dickey-Fuller type test, follows from Perron (1989), and allows for an endogenous break in constant and trend under the alternative. This model uses a fitting regression of the form:

$$y_t = \alpha + \theta DU_t + \gamma t + \varphi D_t(T_b) + \beta y_{t-1} + \sum_{i=1}^k \delta_i y_{t-i} + \epsilon_t \quad (3)$$

Where the null hypothesis of a unit root with drift is represented by $H_0: \beta = 1$, ϵ_t is a white noise error term, $DU_t = 1$ ($t > T_b$) and $D_t(T_b) = 1$ ($t > T_b$) ($t - T_b$). As usual, $1(\cdot)$ is the indicator function, t a deterministic time trend, and T_b the endogenously defined structural break date. On another hand, the P97 test, which allows for a break in the constant and trend under the null and the alternative, uses a fitting regression of the form:

$$y_t = \alpha + \theta DU_t + \gamma t + \varphi D_t(T_b) + \mu DT_t + \beta y_{t-1} + \sum_{i=1}^k \delta_i y_{t-i} + \epsilon_t \quad (4)$$

With $DT_t = 1$ ($t > T_b$) t , and where the null hypothesis of a unit root with drift is represented by $H_0: \beta = 1$.

2.2.2. Granger causality

We study Granger-causality with the modified Wald statistic proposed by Toda and Yamamoto (Dolado and Lütkepohl, 1996; Toda and Yamamoto, 1995) (TY hereafter), which has been extensively used in the study of the energy-GDP nexus. Among many examples, Payne (2009) used it for the US with a dataset covering the 1949-2006 period, Tsani (2010) did so for Greece for the years 1960-2006, Wolde-Rufael (2005) studied 19 African countries between 1971 and 2001, and Apergis and Tang (2013) covered 85 countries for the period 1975-2007.

This method has been widely used because time series must be stationary for Granger tests from a vector autoregressive (VAR) model to be valid, and energy and GDP are usually non-stationary. A vector error correction model (VECM) can be used to do Granger tests in the presence of cointegration (Granger, 1988), as has been done by Akinlo (2008) while studying 11 African countries, Ghali and El-Sakka (2004) for Canada, and Yuan et al. (2008) for China, among others. Yet, pre-testing for unit roots and cointegration leads to problems with the size and power of Granger tests based on a VECM (Cheung and Lai, 1993; Clarke and Mirza, 2006; Harris and Sollis, 2003).

On the contrary, TY can be implemented regardless of the order of integration and cointegration relations of the series, and by bypassing pre-tests, leads to more reliable Granger-causality results. In fact, there is strong evidence that compared to the procedure based on a VECM, the TY approach has a smaller size distortion and a similar performance (Clarke and Mirza, 2006; Yamada and Toda, 1998). Although Zapata and Rambaldi (1997) demonstrated that the TY method has lower power than the VECM approach in bivariate and trivariate models with sample size of 50 or less, our dataset has between 50 and 100 observations per country.

The implementation of the TY procedure requires choosing an appropriate lag length p for a VAR containing the variables of interest. This is usually done with the AIC, BIC, or Hannan-Quinn information criterion. We chose lag length according to the democracy of the three criteria, and in the case of a tie, we prioritized the BIC. Whenever evidence of serial correlation of residuals was found, the lag length was increased to eliminate it.

Next, lag length is extended by the maximum order of integration $I(d^m)$ of the series under study, such that the VAR has $p + d^m$ lags. Thus, the model to implement the TY procedure is:

$$\ln GDP_t = \sum_{i=1}^{p+d^m} \gamma_{1,i} \ln GDP_{t-i} + \sum_{i=1}^{p+d^m} \delta_{1,i} \ln E_{t-i} + \epsilon_{1,t} \quad (5)$$

$$\ln E_t = \sum_{i=1}^{p+d^m} \gamma_{2,i} \ln GDP_{t-i} + \sum_{i=1}^{p+d^m} \delta_{2,i} \ln E_{t-i} + \epsilon_{2,t}$$

Where each γ and δ is a parameter to be estimated, and each ϵ is a white noise error term. With this VAR, Granger-causality is inferred by testing for the joint significance of the first p parameters. Specifically, the null of Granger non-causality running from energy to GDP is represented by $H_0: \delta_{1,i} = 0 \forall i \in p$, and the converse by $H_0: \gamma_{2,i} = 0 \forall i \in p$.

2.2.3. Super exogeneity

Although Granger tests have been the most popular identification strategy in the energy-GDP nexus literature, they are neither a necessary nor sufficient condition for causality (Hendry, 2004). Granger-causality is a measure of forecast capability (Granger, 1980; 1988), and such capacity does not imply causality in non-stationary settings (Hendry and Mizon, 2000). Thus, Granger-causality should be used to study forecasting proficiency, and the establishment of causal links should rest on theory or super exogeneity.

A variable is super exogenous if it is weakly exogenous, and if the parameters of the conditional model of interest are invariant to a class of interventions (Engle et al., 1983; Hendry, 2004). A variable is found to be weakly exogenous if the joint distribution under study is not influenced when conditioned on such variable. This property allows for valid conditional inference. Parameter constancy is found when the marginal density of the weakly exogenous variable has no influence on all the parameters of the conditional model used to study such joint distribution. This property allows for valid policy analyses.

To study if a variable is super exogeneous we follow the VECM-based procedure described by Rodriguez-Caballero and Ventosa-Santaularia (2016). The procedure rests on the idea that if the error correction terms (ECTs) of a variable are jointly non-significant, then its marginal density can be marginalized from the analysis as the variable does not adjust upon shocks to the long run relationship of the joint distribution (Engle and Granger, 1987). On the other hand, parameter constancy can be studied by testing if the parameters of the reduced rank matrix of the VECM are recursively stable (Hansen and Johansen, 1999).

Estimating a VECM first requires studying the integration and cointegration of the series. If the unit root tests described above show that the series are integrated of the same order, then cointegration tests can be implemented to establish the rank of the cointegrating space. As the conventional cointegration test in Johansen (1988; 1991) is invalid under structural breaks, we use the one in Johansen et al. (2000) to account for them. The dates of the structural break T_b were chosen evaluating the endogenously chosen break dates for the ZA and P97 tests and the results from a Chow-type test (Chow, 1960) in light of each country's unique historical events (See Tables A3 and A4 in the Appendix).

For countries with evidence of cointegration, we estimate a VECM of the form:

$$\Delta GDP_t = \alpha_1 \begin{bmatrix} \beta_1 \\ \beta_2 \\ \gamma \end{bmatrix} \begin{bmatrix} GDP_{t-1} \\ E_{t-1} \\ t \end{bmatrix} + \sum_{i=1}^{p-1} \Gamma_{11,i} \Delta GDP_{t-i} + \sum_{i=1}^{p-1} \Gamma_{12,i} \Delta E_{t-i} + \mu_1 + \Psi_1' D_t + \varepsilon_{1,t} \quad (6)$$

$$\Delta E_t = \alpha_2 \begin{bmatrix} \beta_1 \\ \beta_2 \\ \gamma \end{bmatrix} \begin{bmatrix} GDP_{t-1} \\ E_{t-1} \\ t \end{bmatrix} + \sum_{i=1}^{p-1} \Gamma_{21,i} \Delta GDP_{t-i} + \sum_{i=1}^{p-1} \Gamma_{22,i} \Delta E_{t-i} + \mu_2 + \Psi_2' D_t + \varepsilon_{2,t}$$

Where each α is an ECT, each β is an element of the cointegrating vector, and each Γ is a parameter representing a variable's short run dynamics. Also, t is a deterministic time trend, μ is a parameter

Table 2: Error correction terms and cointegrating vector

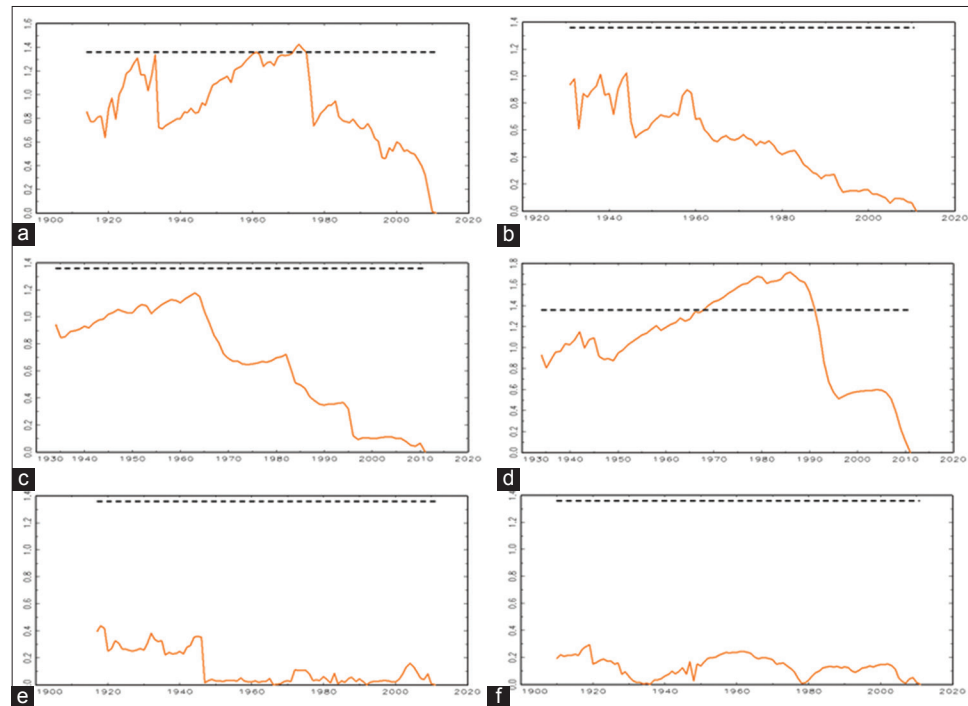
| Country | α_1 | α_2 | β_2 | Country | α_1 | α_2 | β_2 |
|------------|------------------------------|------------------------------|------------------------------|-----------|------------------------------|------------------------------|------------------------------|
| Argentina | -0.156 (0.000) [0.001] | -0.198 (0.009) [0.013] | 0.242 (0.039) [0.05] | Mexico | -0.055 (0.044) [0.054] | 0.856 (0.000) [0.001] | -0.960 (0.000) [0.001] |
| Brazil | 0.074 (0.001) [0.002] | 0.280 (0.000) [0.001] | -0.977 (0.000) [0.001] | Nicaragua | -0.072 (0.288) [0.328] | 0.674 (0.000) [0.001] | -0.725 (0.000) [0.001] |
| Chile | -0.058 (0.488) [0.537] | 0.412 (0.000) [0.001] | -0.745 (0.000) [0.001] | Panama | -0.036 (0.000) [0.001] | -0.070 (0.067) [0.079] | 0.854 (0.001) [0.002] |
| Costa Rica | -0.015 (0.647) [0.676] | 0.580 (0.000) [0.001] | -1.189 (0.000) [0.001] | Uruguay | -0.335 (0.000) [0.001] | -0.331 (0.013) [0.018] | -0.033 (0.655) [0.676] |
| Cuba | -0.389 (0.000) [0.001] | -0.369 (0.008) [0.012] | -0.242 (0.000) [0.001] | Venezuela | -0.135 (0.000) [0.001] | -0.043 (0.676) [0.676] | -0.244 (0.000) [0.001] |
| Dom. Rep. | -0.037 (0.015) [0.02] | -0.203 (0.000) [0.001] | 1.342 (0.000) [0.001] | | | | |

ECT-GDP and ECT-E are the error correction terms in the GDP and energy consumption equations respectively. Beta is the parameter of energy in the cointegrating vector. P-values in parenthesis and q-values in squared brackets

Table 3: Summary of results

| Country | Integration | | Granger causality | Coint. rank | Weak-exogeneity | Super-exogeneity |
|------------|-------------|--------|------------------------|-------------|-----------------|------------------|
| | GDP | Energy | | | | |
| Argentina | I(1) | I(1) | GDP→E | 1 | No | - |
| Bolivia | C | I(2) | GDP→E | - | - | - |
| Brazil | I(1) | I(1) | Neutral ^(a) | 1 | No | - |
| Chile | I(1) | I(1) | GDP→E ^(c) | 1 | GDP→E | No |
| Colombia | I(1) | I(1) | Neutral | 0 | - | - |
| Costa Rica | I(1) | I(1) | Neutral ^(b) | 1 | GDP→E | GDP→E |
| Cuba | I(1) | I(1) | GDP←E | 1 | No | - |
| Dom. Rep. | I(1) | I(1) | Neutral | 1 | No | - |
| Ecuador | I(2) | C | Neutral | - | - | - |
| Salvador | I(1) | C | GDP→E | - | - | - |
| Guatemala | I(1) | I(1) | Neutral | 0 | - | - |
| Haiti | I(1) | C | Neutral | - | - | - |
| Honduras | I(1) | I(2) | GDP↔E | - | - | - |
| Mexico | I(1) | I(1) | GDP↔E | 1 | GDP→E | GDP→E |
| Nicaragua | I(1) | I(1) | Neutral | 1 | GDP→E | No |
| Panama | I(1) | I(1) | Neutral | 1 | GDP←E | GDP←E |
| Paraguay | I(1) | C | GDP→E | - | - | - |
| Peru | I(1) | I(1) | GDP→E | 0 | - | - |
| Uruguay | I(1) | I(1) | Neutral | 1 | No | - |
| Venezuela | I(1) | I(1) | GDP→E ^(c) | 1 | GDP←E | GDP←E |

"C" means contradictory results. "-" for procedures that cannot be done. "neutral" supports the neutrality hypothesis. "No" means that weak or superexogeneity was not found. ^(a)GDP→E at 10% level of significance. ^(b)GDP←E at 10% level of significance. ^(c)GDP↔E at 10% level of significance

Figure 4: Recursive eigenvalues of VECM models: τ test $\alpha = 0.05$. (a) Chile (b) Costa Rica (c) Mexico (d) Nicaragua (e) Panama (f) Venezuela

associated with the constant term, $D_t = 1$ ($t > T_b$) is a $B \times 1$ vector containing B level breaks, and Ψ is a $B \times 1$ vector of parameters associated with such breaks. Finally, is the lag length of the underlying VAR, and each is a white noise error term.

Given (5), there is evidence of weak exogeneity of GDP and energy if we fail to reject the null $H_0: \alpha_1 = 0$ and $H_0: \alpha_2 = 0$ respectively. Furthermore, parameter constancy is tested with the time path of the τ -statistics of recursive eigenvalues of the reduced rank matrix $\Pi = [\alpha_1 \alpha_2]' [\beta_1 \beta_2]'$. As the null of eigenvalue stability is rejected if the τ -statistics are larger than their critical values, failure to reject implies that there is no evidence against the proposition that the marginal distribution of the weakly exogenous variables is independent of the joint distribution of the two variables. If parameter constancy fails to be rejected, the variables found to be weakly exogenous are also super exogenous.

2.2.4. Multiple inference testing

We use the FDR introduced by Benjamini and Hochberg (1995) to control for the expected proportion of type I errors derived from multiple hypotheses testing. We use standard q -values as described in Anderson (2008), which modify the p values from a family of tests as follows:

Sort M hypotheses in order of decreasing significance such that their corresponding values are ordered as $p_1 < \dots < p_M$. Then, choose any value $q \in (0, 1)$ and the largest $r \in M$ such that:

$$p_r \leq qr/M \quad (7)$$

The control of the FDR at the q level of significance implies rejecting the hypotheses associated with $p_1 < \dots < p_r$. Finally, the smallest q value at which a hypothesis would be rejected — the equivalent to the P value —, is computed by repeating this

procedure for all levels of q and identifying the point where the significance changes.

In this study we test 40 Granger-causality and 33 weak exogeneity hypotheses, and therefore present alongside each P value its corresponding q value. To obtain such values we consider all Granger and weak exogeneity tests as distinct “families” (Hochberg and Tamhane, 1987). Furthermore, we do not use the FDR for the integration and cointegration tests due to their non-standard distributions.

3. RESULTS

The unit root tests show generally consistent evidence of non-stationarity, even under structural breaks. For GDP, all countries except Bolivia and Ecuador are inferred to be $I(1)$. While Ecuador is inferred to be $I(2)$, Bolivia shows contradicting results with stronger evidence supporting $I(0)$ (Table A1 in the appendix). For energy, 14 countries are inferred to be $I(1)$. While Bolivia is inferred to be $I(2)$, Ecuador, El Salvador, Haiti, Honduras, and Paraguay show contradicting results (Table A2 in the appendix).

Granger-tests following TY are done on all countries under study, expanding the optimal lag length by one or two according to the unit root tests. In the case of countries with contradictory results we expand the lag length by two. At the 5% level of significance and taking into consideration q -values, Granger-causality running from GDP to energy is found for seven countries (Argentina, Bolivia, Chile, El Salvador, Paraguay, Peru, and Venezuela), and from energy to GDP is found for one country (Cuba). Furthermore, bidirectional Granger-causality is found for two countries (Honduras and Mexico), while no relation is found for 10 countries (Table 1). At the 10% level of significance, two of these

10 countries show evidence of Granger-causality, one running from GDP to energy (Brazil) and the other in the opposite direction (Costa Rica). Moreover, at such lower significance level two countries (Chile and Venezuela) previously evidencing Granger-causality from GDP to energy show evidence of bidirectional Granger-causality. Lastly, the use of q-values instead of p-values changes relevant inferences in five cases at the 5% level of significance, and in four at the 10% level of significance.

Given the pre-tests, a VECM can be estimated for only 11 of the 20 countries under study, which still represent roughly 90 per cent of the GDP and energy consumption of the region. The ECTs of the estimated VECMs (Table 2) show that at the 5% level of significance, GDP is weakly exogenous in four countries (Chile, Costa Rica, Nicaragua, and Mexico), and energy is weakly exogenous in two (Panama and Venezuela). The remaining five countries (Argentina, Brazil, Cuba, Dom. Rep, and Uruguay) show no evidence of weak exogeneity. Note that the adjustment for multiple inferences makes GDP weakly exogenous for Mexico.

At the 5% level of significance, Costa Rica, Mexico, Panama, and Venezuela fail to reject the null of eigenvalue stability, while Chile and Nicaragua reject such null (Figure 4). Thus, results are split evenly between the six countries with evidence of weak exogeneity, with super exogeneity of GDP in Costa Rica and Mexico, of super exogeneity of energy in Panama and Venezuela, and of no super exogeneity in Chile and Nicaragua. Moreover, the five countries with no evidence of weak exogeneity also fail to reject the null of eigenvalue stability, which implies a stable mutual adjustment between energy and GDP.

4. DISCUSSION AND CONCLUSION

A summary of all results is provided in Table 3. Our results indicate that for Latin American countries over the 20th century there is scarce evidence of super exogeneity of both GDP growth and energy use. Unidirectional causality running from energy to GDP is only supported for Panama and Venezuela, while the converse only holds for Costa Rica and Mexico. For Chile and Nicaragua there is evidence of weak exogeneity suggesting unidirectional causality running from GDP to energy, but the rejection of parameter stability implies results cannot be used to guide policy-making.

With TY we find that GDP growth has predictive capacity for energy use for seven countries (Argentina, Bolivia, Chile, El Salvador, Paraguay, Peru, and Venezuela), while energy use has predictive capacity for GDP growth only for Cuba. Moreover, both variables have no predictive capacity on each other for nine countries (Brazil, Colombia, Costa Rica, Dominican Republic, Ecuador, Guatemala, Haiti, Nicaragua, Panama, and Uruguay), and have such capacity running in both directions for Honduras and Mexico.

The use of the FDR does not have a profound influence on the overall results but has some noteworthy implications. On one hand, the adjustment modifies the weak exogeneity results for Mexico, for which we latter infer super exogeneity from GDP to energy. On the other hand, the FDR modifies the inference on Granger-causality for Brazil, Chile, Colombia, Costa Rica, and Venezuela.

Our results largely contradict those of Rodriguez-Caballero and Ventosa-Santaularia (2016), which is the closest previous study in terms of methodology and countries. Using super exogeneity for roughly the same countries, the authors report causality running from energy to GDP for eight countries, while we do so for only two (Panama is in both). Moreover, they report causality from GDP to energy for Colombia, Mexico, and the USA, while we do so for Mexico and Costa Rica. These differences are likely due to the energy series, as we study 100 years of data on all commercial energy sources, whereas they use 40 years of data on electricity consumption only. The evidence suggesting that electricity consumption is particularly limiting for economic growth (Ozturk, 2010), and the shallow electrification of the region (Rubio and Tafunell, 2014), helps explain our relatively scarce findings. Regarding the other studies in the region, using Granger tests Apergis and Payne (2009) and Chang and Carballo (2011) find a unidirectional relation running from energy to GDP, but Al-Mulali et al. (2013) finds a bidirectional relation. The inconsistencies between these results and our TY outcomes could be due to different methods, apart from different energy series. With respect to long-run studies, our TY results are compatible with the subset of evidence in Stern and Enflo (2013) drawn from bivariate estimation, yet not with those in Vaona (2012).

We do not find a consistent causal relationship between energy and GDP despite using a new century long dataset for Latin America and a novel identification strategy. This highlights the difficulties of our current approaches in modelling the relation between energy and the economy, especially given the inexistence of a homogeneous relation under highly heterogeneous spatial and temporal dimensions. Given the essential relation between energy, economies, and societies, new approaches are required to model their interaction.

We should point to several caveats of our results. First, omitted variables bias might be present given the bivariate setting (Menegaki, 2014; Ozturk, 2010; Stern, 1993). Unfortunately, relevant data series (e.g., capital, labor) for over a 100 years for these 20 countries were not available. Second, our controls for structural breaks might be insufficient to account for major economic crisis (e.g., Great Depression, Debt Crisis) and technological breakthroughs (e.g., new prime movers, efficiency enhancements) that took place during the twentieth century. Third, the proper assessment of our results is limited by the “atheoretical” modelling of long-run dynamics done in this paper and generally in the literature as opposed to theory-based analysis (Pesaran, 1997). Yet, there is no alternative to this approach as long as the energy-GDP nexus lacks a sound theoretical framework (Bruns et al., 2014).

These qualifications point to future research avenues. One is expanding the dataset to include labor and capital to enrich this analysis. Another is delimited testing periods by major events, which might reveal that the energy-GDP nexus is regime specific. A third is to assess if there are patterns capable of explaining the current heterogeneity of results, be it regime changes, structural transformation, or others. For example, as suggested by (Stern, 2011), the relation could evolve according to stages of economic development, where in earlier stages (contained in our data) energy might be relatively abundant, and thus GDP as a function

of relatively scarce capital and labor limits energy consumption. In latter stages (those represented in studies starting after 1970), energy becomes relatively scarce and a limiting input to growth. Although this idea is compatible with findings that developing countries tend to support more the conservation hypothesis (Chen et al., 2012), it is not with the falling cost shares of energy (Csereklyei et al., 2016).

A last major future research avenue is the theoretical understanding of the energy-GDP nexus (Bruns et al., 2014) capable of specifying how it is influenced by labor, capital, and other factors. Admittedly, without an accompanying theory there is no reason to expect a homogenous relation between these variables that holds across space and time (Voudouris et al., 2015), nor is it possible to identify the factors that drive the mutating relationship. Perhaps the most valuable insight of this “no-results” paper is the inadequacy of our current modelling approach as little-to-nothing can be said with decent data and complex methods. This recognition underscores the urgency to better model how energy influences economies and societies. Attempts to provide such a theory can be found in Stern (2011), Kümmel et al. (2015), Court et al. (2018), and Keen et al. (2019) but it is still a work in progress.

Although there is no evidence to define one-size-fits-all policies on energy management, there is enough to allow for some policy recommendations and a word of caution. If policy was to be based on the results of the Granger-causality test alone, then for a large majority of countries in Latin America there would be a strong case to pursue aggressive energy efficiency measures without regards to their impact on GDP, given the evidence supporting the neutrality hypothesis and the seven countries where GDP growth has predictive capacity for energy use. However, the results of weak and super exogeneity call for a more cautious approach. Only in Mexico and Costa Rica such policies seem unlikely to affect GDP growth, while in Venezuela and Panama curtailing energy consumption would impact GDP growth negatively. Furthermore, for three of the largest economies of the region - Argentina, Brazil and Uruguay (plus Cuba and the Dominican Republic), our results imply a stable mutual adjustment between energy and GDP. Thus, policy makers designing and implementing energy policies should take with a grain of salt any advice on the energy-GDP nexus coming from a single methodological approach and based on aggregated results.

REFERENCES

- Akinlo, A.E. (2008), Energy consumption and economic growth: Evidence from 11 Sub-Sahara African countries. *Energy Economics*, 30, 2391-2400.
- Al-Mulali, U., Lee, J.Y., Mohammed, A.H., Sheau-Ting, L. (2013), Examining the link between energy consumption, carbon dioxide emission, and economic growth in Latin America and the Caribbean. *Renewable and Sustainable Energy Reviews*, 26, 42-48.
- Anderson, M.L. (2008), Multiple inference and gender differences in the effects of early intervention: A reevaluation of the abecedarian, perry preschool, and early training projects. *Journal of the American Statistical Association*, 103(484), 1481-1495.
- Apergis, N., Payne, J.E. (2009), Energy consumption and economic growth in Central America: Evidence from a panel cointegration and error correction model. *Energy Economics*, 31, 211-216.
- Apergis, N., Tang, C.F. (2013), Is the energy-led growth hypothesis valid? New evidence from a sample of 85 countries. *Energy Economics*, 38, 24-31.
- Baltagi, B., Griffin, J. (1997), Pooled estimators v.s. Their heterogeneous counterparts in the context of dynamic demand for gasoline. *Journal of Econometrics*, 77, 303-327.
- Beaudreau, B.C. (2005), Engineering and economic growth. *Structural Change and Economic Dynamics*, 16, 211-220.
- Benjamini, Y., Hochberg, Y. (1995), Controlling the false discovery rate: A practical and powerful approach to multiple testing. *Journal of the Royal Statistical Society*, 57(1), 289-300.
- Bruns, S.B., Gross, C., Stern, D.I. (2014), Is there really granger causality between energy use and output? *Energy Journal*, 35(4), 101-133.
- Campos, J., Ericsson, N.R., Hendry, D.F. (1996), Cointegration tests in the presence of structural breaks. *Journal of Econometrics*, 70, 187-220.
- Chang, C.C., Carballo, C.F.S., (2011), Energy conservation and sustainable economic growth: The case of Latin America and the Caribbean. *Energy Policy*, 39, 4215-4221.
- Chen, P.Y., Chen, S.T., Chen, C.C. (2012), Energy consumption and economic growth: New evidence from meta analysis. *Energy Policy*, 44(5), 245-255.
- Cheung, Y.W., Lai, K.S. (1993), Finite-sample sizes of johansen's likelihood ratio tests for cointegration. *Oxford Bulletin of Economics and Statistics*, 55(3), 313-328.
- Chontanawat, J., Hunt, L.C., Pierse, R. (2008), Does energy consumption cause economic growth? Evidence from a systematic study of over 100 countries. *Journal of Policy Modeling*, 30, 209-220.
- Chow, G.C. (1960), Tests of equality between sets of coefficients in two linear regressions. *Econometrica*, 28(3), 591-605.
- Clarke, J.A., Mirza, S. (2006), A comparison of some common methods for detecting granger noncausality. *Journal of Statistical Computation and Simulation*, 76(3), 207-231.
- Cleveland, C., Costanza, R., Hall, C., Kaufmann, R. (1984), Energy and the U.S. economy: A biophysical perspective. *Science*, 225(4665), 890-897.
- Court, V., Jouvet, P.A., Lantz, F. (2018), Long-term endogenous economic growth and energy transitions. *Energy Journal*, 39(1), 29-57.
- Csereklyei, Z., Rubio-Varas, M., Stern, D.I. (2016), Energy and economic growth: The stylized facts. *The Energy Journal*, 37(2), 223-255.
- Dolado, J.J., Lütkepohl, H. (1996), Making wald tests work for cointegrated VAR systems. *Econometric Reviews*, 15(4), 369-386.
- Elder, J., Kennedy, P.E. (2001), Testing for unit roots: What should students be taught? *Journal of Economic Education*, 32(2), 137-146.
- Elliott, G., Rothenberg, T.J., Stock, J.H. (1996), Efficient tests for an autoregressive unit root. *Econometrica*, 64(4), 813-836.
- Engle, R.F., Granger, C.W.J. (1987), Co-integration and error correction: Representation, estimation, and testing. *Econometrica*, 55(2), 251-276.
- Engle, R.F., Hendry, D.F., Richard, J.F. (1983), Exogeneity. *Econometrica*, 51(2), 277-304.
- Ghali, K.H., El-Sakka, M.I.T. (2004), Energy use and output growth in Canada: A multivariate cointegration analysis. *Energy Economics*, 26, 225-238.
- Granger, C.W.J. (1980), Testing for causality. A personal viewpoint. *Journal of Economic Dynamics and Control*, 2, 329-352.
- Granger, C.W.J. (1988), Some recent development in a concept of causality. *Journal of Econometrics*, 39, 199-211.
- Hansen, H., Johansen, S. (1999), Some tests for parameter constancy in cointegrated VAR models. *The Econometrics Journal*, 2, 306-333.
- Harris, R., Sollis, R. (2003), *Applied Time Series Modelling and Forecasting*. United Kingdom: John Wiley and Sons, Inc.
- Hendry, D.F. (2004), Causality and exogeneity in non-stationary economic time series. In: Baltagi, B.H., Sadka, E., editors. *Contributions to Economic Analysis*. New York: Emerald Insight. p21-48.
- Hendry, D.F., Mizon, G.E. (2000), Reformulating empirical macroeconomic modelling. *Oxford Review of Economic Policy*, 16(4), 138-159.

- Herrerias, M.J., Joyeux, R., Girardin, E. (2013), Short and long-run causality between energy consumption and economic growth: Evidence across regions in China. *Applied Energy*, 112, 1483-1492.
- Hochberg, Y., Tamhane, A.C. (1987), *Multiple Comparison Procedures*. New York: Wiley.
- International Energy Agency. (2013), *Energy Balances of Non-OECD Countries 2013*. Paris: International Energy Agency.
- Johansen, S. (1988), Statistical analysis of cointegration vectors. *Journal of Economic Dynamics and Control*, 12, 231-254.
- Johansen, S. (1991), Estimation and hypothesis testing of cointegration vectors in Gaussian vector autoregressive models. *Econometrica*, 59(6), 1551-1580.
- Johansen, S., Mosconi, R., Nielsen, B. (2000), Cointegration analysis in the presence of structural breaks in the deterministic trend. *Economic Journal*, 3, 216-249.
- Jutta, B., Inklaar, R., de Jong H., van Zanden, J.L. (2018), Maddison Project Database, Version 2018. "Rebasing 'Maddison': New Income Comparisons and the Shape of Long-run Economic Development. Maddison Project Working Paper 10.
- Kalimeris, P., Richardson, C., Bithas, K. (2014), A meta-analysis investigation of the direction of the energy-GDP causal relationship: Implications for the growth-degrowth dialogue. *Journal of Cleaner Production*, 67, 1-13.
- Keen, S., Ayres, R.U., Standish, R. (2019), A note on the role of energy in production. *Ecological Economics*, 157, 40-46.
- Kocaaslan, O.K. (2013), The causal link between energy and output growth: Evidence from markov switching granger causality. *Energy Policy*, 63, 1196-1206.
- Kraft, J., Kraft, A. (1978), On the relationship between energy and GNP. *Journal of Energy and Development*, 3, 401-403.
- Kümmel, R., Lindenberg, D., Weiser, F. (2015), The economic power of energy and the need to integrate it with energy policy. *Energy Policy*, 86, 833-843.
- Kwiatkowski, D., Phillips, P.C.B., Schmidt, P., Shin, Y. (1992), Testing the null hypothesis of stationarity against the alternative of a unit root. *Journal of Econometrics*, 54, 159-178.
- Lee, C. C. (2005), Energy consumption and GDP in developing countries: A cointegrated panel analysis. *Energy Economics*, 27, 415-427.
- Masih, A.M.M., Masih, R. (1996), Energy consumption, real income and temporal causality: Results from a multi-country study based on cointegration and error-correction modelling techniques. *Energy Economics*, 18(3), 165-183.
- Menegaki, A.N. (2014) On energy consumption and GDP studies; A meta-analysis of the last two decades. *Renewable and Sustainable Energy Reviews*, 29, 31-36.
- Narayan, S. (2016), Predictability within the energy consumption-economic growth nexus: Some evidence from income and regional groups. *Economic Modelling*, 54, 515-521.
- Ozturk, I. (2010), A literature survey on energy-growth nexus. *Energy Policy*, 38, 340-349.
- Payne, J.E. (2009), On the dynamics of energy consumption and output in the US. *Applied Energy*, 86, 575-577.
- Payne, J.E. (2010), Survey of the international evidence on the causal relationship between energy consumption and growth. *Journal of Economic Studies*, 37(1), 53-95.
- Perron, P. (1989), The great crash, the oil price shock, and the unit root hypothesis. *Econometrica*, 57(6), 1361-1401.
- Perron, P. (1997), Further evidence on breaking trend functions in macroeconomic variables. *Journal of Econometrics*, 80(2), 355-385.
- Pesaran, M.H. (1997), The role of economic theory in modelling the long run. *The Economic Journal*, 107(440), 178-191.
- Rodriguez-Caballero, C.V., Ventosa-Santaularia, D. (2016), Energy-growth long-term relationship under structural breaks. Evidence from Canada, 17 Latin American economies and the USA. *Energy Economics*, 61, 121-134.
- Rubio, M.D.M., Folchi, M. (2012), Will small energy consumers be faster in transition? Evidence from the early shift from coal to oil in Latin America. *Energy Policy*, 50(34), 50-61.
- Rubio, M.D.M., Tafunell, X. (2014), Latin American hydropower: A century of uneven evolution. *Renewable and Sustainable Energy Reviews*, 38, 323-334.
- Rubio, M.D.M., Yáñez, C., Folchi, M., Carreras, A. (2010), Energy as an indicator of modernization in Latin America, 1890-1925. *Economic History Review*, 63(3), 769-804.
- Smyth, R., Narayan, P.K. (2015), Applied econometrics and implications for energy economics research. *Energy Economics*, 50, 351-358.
- Stern, D.I. (1993), Energy and economic growth in the USA: A multivariate approach. *Energy Economics*, 15, 137-150.
- Stern, D.I. (2011), The role of energy in economic growth. *Annals of the New York Academy of Sciences*, 1219, 26-51.
- Stern, D.I., Enflo, K. (2013), Causality between energy and output in the long-run. *Energy Economics*, 39, 135-146.
- Toda, H.Y., Yamamoto, T. (1995), Statistical inference in vector autoregressions with possibly integrated processes. *Journal of Econometrics*, 66, 225-250.
- Toman, M.T., Jemelkova, B. (2003), Energy and economic development: An assessment of the state of knowledge. *The Energy Journal*, 24(4), 93-112.
- Tsani, S.Z. (2010), Energy consumption and economic growth: A causality analysis for Greece. *Energy Economics*, 32(3), 582-590.
- United Nations (UN/WES). (1976), *World Energy Supplies 1950-1974*. New York: Statistical Papers Series No. 19.
- Vaona, A. (2012), Granger non-causality tests between (non)renewable energy consumption and output in Italy since 1861: The (ir)relevance of structural breaks. *Energy Policy*, 45, 226-236.
- Voudouris, V., Ayres, R., Serrenho, A.C., Kiose, D. (2015), The economic growth enigma revisited: The EU-15 since the 1970s. *Energy Policy*, 86, 812-832.
- Weissenbacher, M. (2009), *Sources of Power: How Energy Forges Human History*. Santa Barbara, CA: Praeger.
- White, L.A. (1943), Energy and the evolution of culture. *American Anthropologist*, 45(3), 335-356.
- Wolde-Rufael, Y. (2004), Disaggregated industrial energy consumption and GDP: The case of Shanghai, 1952-1999. *Energy Economics*, 26, 69-75.
- Wolde-Rufael, Y. (2005), Energy demand and economic growth: The African experience. *Journal of Policy Modeling*, 27, 891-903.
- Yamada, H., Toda, H.Y. (1998), Inference in possibly integrated vector autoregressive models: Some finite sample evidence. *Journal of Econometrics*, 86, 55-95.
- Yáñez, C., Rubio, M.D.M., Jofré, J., Carreras, A. (2013), El consumo aparente de carbón mineral en américa latina, 1841-2000. Una historia de progreso y frustración. *Revista de Historia Industrial*, 53, 25-76.
- Yu, E.S.H., Choi, J.Y. (1985), The causal relationship between energy and GNP: An international comparison. *Journal of Energy and Development*, 10(2), 249-272.
- Yuan, J.H., Kang, J.G., Zhao, C.H., Hu, Z.G. (2008), Energy consumption and economic growth: Evidence from China at both aggregated and disaggregated levels. *Energy Economics*, 30, 3077-3094.
- Zapata, H.O., Rambaldi, A.N. (1997), Monte carlo evidence on cointegration and causation. *Oxford Bulletin of Economics and Statistics*, 59(2), 305-9049.
- Zivot, E., Andrews, D. (1992), Further evidence on the great crash, the oil-price shock, and the unit-root hypothesis. *Journal of Business and Economic Statistics*, 10(3), 251-270.

APPENDIX

Table A1: Unit root test - log of GDP

| Country | Series | DF-GLS | | KPSS | ZA | | | P97 |
|-------------|-----------------------|-----------|-----------|----------|--------------------|----------------|---------------|-----------|
| | | No trend | Trend | | Break in intercept | Break in trend | Break in both | |
| Argentina | Levels | 3.145 | -2.253 | 0.231*** | -4.920** | -4.170* | -4.670 | -5.548* |
| | 1 st diff. | -6.858*** | -7.008*** | 0.037 | -9.533*** | -9.381*** | -9.964*** | -9.406*** |
| Bolivia | Levels | 1.366 | -3.574** | 0.096 | -4.308 | -3.869 | -4.292 | |
| | 1 st diff. | -3.665*** | -3.720*** | 0.045 | -4.346 | -4.022 | -4.538 | -4.270 |
| Brazil | Levels | 1.819 | -1.066 | 0.177** | -2.882 | -2.438 | -3.283 | -3.327 |
| | 1 st diff. | -3.396*** | -4.720*** | 0.187** | -7.175*** | -6.088*** | -7.104*** | -10.13*** |
| Chile | Levels | 2.757 | -2.220 | 0.265*** | -3.795 | -3.639 | -4.138 | -4.463 |
| | 1 st diff. | -7.628*** | -7.872*** | 0.057 | -7.741*** | -7.631*** | -7.935*** | -9.125*** |
| Colombia | Levels | 1.200 | -1.611 | 0.191** | -3.133 | -2.983 | -3.077 | -2.843 |
| | 1 st diff. | -2.795*** | -4.664*** | 0.079 | -5.854*** | -5.696*** | -6.376*** | -6.430*** |
| Costa Rica | Levels | 1.589 | -1.580 | 0.15** | -3.841 | -3.098 | -3.120 | -3.323 |
| | 1 st diff. | -2.824*** | -4.362*** | 0.147** | -6.813*** | -5.987*** | -6.693*** | -6.301*** |
| Cuba | Levels | 1.263 | -1.821 | 0.183** | -5.444*** | -3.246 | -4.809 | -4.315 |
| | 1 st diff. | -4.321*** | -5.284*** | 0.048 | -8.003*** | -7.882*** | -8.650*** | -8.965*** |
| Dom. Rep. | Levels | 1.772 | -1.614 | 0.155** | -3.855 | -2.745 | -3.784 | -5.152 |
| | 1 st diff. | -3.351*** | -4.912*** | 0.067 | -8.667*** | -8.207*** | -8.596*** | -9.144*** |
| Ecuador | Levels | 0.652 | -1.920 | 0.191** | -3.117 | -2.081 | -2.737 | -3.001 |
| | 1 st diff. | -2.457** | -2.495 | 0.156** | -3.988 | -3.181 | -3.883 | -4.862 |
| El Salvador | Levels | 1.822 | -1.747 | 0.203** | -3.513 | -2.841 | -3.532 | -4.006 |
| | 1 st diff. | -5.906*** | -6.537*** | 0.093 | -7.471*** | -6.716*** | -7.521*** | -7.001*** |
| Guatemala | Levels | 1.759 | -3.306** | 0.116 | -4.115 | -4.082 | -4.481 | -3.444 |
| | 1 st diff. | -5.236*** | -6.734*** | 0.035 | -6.862*** | -6.623*** | -7.179*** | -8.700*** |
| Haiti | Levels | 0.075 | -1.563 | 0.173** | -3.239 | -3.081 | -4.017 | -4.147 |
| | 1 st diff. | -4.012*** | -4.006** | 0.075 | -5.371** | -4.468** | -5.363** | -5.433* |
| Honduras | Levels | 2.764 | -2.004 | 0.194** | -5.463*** | -4.099 | -5.526** | -5.607 |
| | 1 st diff. | -4.922*** | -5.523*** | 0.068 | -6.133*** | -6.177*** | -8.126*** | -8.180*** |
| Mexico | Levels | 1.598 | -1.062 | 0.231*** | -3.046 | -2.538 | -2.298 | -2.336 |
| | 1 st diff. | -3.927*** | -4.989*** | 0.218*** | -6.911*** | -5.739*** | -7.152*** | -10.94*** |
| Nicaragua | Levels | 0.638 | -1.204 | 0.236*** | -3.538 | -2.724 | -2.785 | -4.169 |
| | 1 st diff. | -5.823*** | -5.935*** | 0.111 | -5.399*** | -4.189* | -5.744*** | -5.872** |
| Panama | Levels | 2.274 | -1.523 | 0.268*** | -3.141 | -3.646 | 4.082 | -4.492 |
| | 1 st diff. | -3.922*** | -4.214*** | 0.062 | -5.799*** | -5.465*** | -5.748*** | -8.179*** |
| Paraguay | Levels | 1.870 | -1.327 | 0.137* | -4.271 | -2.752 | -3.312 | -4.264 |
| | 1 st diff. | -1.668 | -2.931* | 0.166* | -9.734*** | -8.292*** | -9.786*** | -8.352*** |
| Peru | Levels | 2.650 | -2.092 | 0.187** | -5.000** | -3.228 | -4.503 | -3.484 |
| | 1 st diff. | -5.438*** | -6.351*** | 0.065 | -7.148*** | -7.105*** | -7.697*** | -7.555*** |
| Uruguay | Levels | 2.326 | -2.985* | 0.244*** | -3.643 | -3.970 | -4.667 | -5.948** |
| | 1 st diff. | -5.982*** | -6.766*** | 0.051 | -8.066*** | -7.966*** | -8.158*** | -7.947*** |
| Venezuela | Levels | 1.980 | -1.001 | 0.218*** | -3.989 | -3.298 | -3.732 | -3.385 |
| | 1 st diff. | -1.728 | -4.700*** | 0.264*** | -9.257*** | -9.349*** | -9.522*** | -8.111*** |

***, **, and *implies rejection at the 1%, 5%, and 10% levels respectively

Table A2: Unit root test - log of energy

| Country | Series | DF-GLS | | KPSS | ZA | | | P97 |
|------------|-----------------------|-----------|-----------|---------|--------------------|----------------|---------------|-----------|
| | | No trend | Trend | | Break in intercept | Break in trend | Break in both | |
| Argentina | Levels | 0.981 | -2.932* | 0.194** | -4.597* | -4.961*** | -4.996* | -5.133 |
| | 1 st diff. | -3.406*** | -6.213*** | 0.028 | -6.314*** | -6.104*** | -8.988*** | -7.685*** |
| Bolivia | Levels | 2.691 | -1.859 | 0.195** | -3.556 | -3.564 | -3.886 | -3.548 |
| | 1 st diff. | -0.242 | -1.668 | 0.032 | -4.467* | -4.130* | -4.514 | -5.691** |
| Brazil | Levels | 2.630 | -1.801 | 0.18** | -3.308 | -2.848 | -3.302 | -3.285 |
| | 1 st diff. | -6.209*** | -6.234*** | 0.102 | -9.499*** | -8.812*** | -9.456*** | -9.553*** |
| Chile | Levels | 2.902 | -2.658 | 0.187** | -3.865 | -3.784 | -4.039 | -4.520 |
| | 1 st diff. | -9.061*** | -9.534*** | 0.052 | -6.017*** | -5.824*** | -6.377*** | -10.57*** |
| Colombia | Levels | 0.498 | -1.920 | 0.3*** | -4.417 | -5.583*** | -5.534** | -5.196 |
| | 1 st diff. | -0.963 | -4.061*** | 0.099 | -7.017*** | -7.754*** | -7.870*** | -11.64*** |
| Costa Rica | Levels | 2.900 | -2.270 | 0.105 | -3.902 | -3.853 | -4.268 | -5.277* |
| | 1 st diff. | -1.497 | -4.138*** | 0.041 | -10.39*** | -10.17*** | -11.81*** | -15.40*** |
| Cuba | Levels | 1.032 | -1.508 | 0.122* | -3.693 | -2.551 | -3.705 | -3.672 |

(Contd...)

Table A2: (Continued)

| Country | Series | DF-GLS | | KPSS | ZA | | | P97 |
|-------------|-----------------------|-----------|-----------|----------|--------------------|----------------|---------------|-----------|
| | | No trend | Trend | | Break in intercept | Break in trend | Break in both | |
| Dom. Rep. | 1 st diff. | -5.597*** | -5.845*** | 0.078 | -6.670*** | -6.290*** | -8.135*** | -6.920*** |
| | Levels | 0.927 | -0.653 | 0.238*** | -4.442 | -2.960 | -4.372 | -4.963 |
| Ecuador | 1 st diff. | -3.911*** | -4.417*** | 0.203** | -5.412*** | -5.005*** | -5.553** | -5.272 |
| | Levels | 3.425 | -1.888 | 0.233*** | -4.233 | -4.886** | -5.107** | -5.375* |
| El Salvador | 1 st diff. | 10.32*** | -10.51*** | 0.043 | -8.266*** | -8.195*** | -9.217*** | |
| | Levels | 2.336 | -1.330 | 0.22*** | -3.725 | -3.749 | 4.057 | -5.831** |
| Guatemala | 1 st diff. | -0.169 | -2.129 | 0.04 | -6.330*** | -5.618*** | -6.439*** | -10.87*** |
| | Levels | 1.514 | -2.449 | 0.206** | -5.619*** | -4.731** | -5.624*** | -5.467* |
| Haiti | 1 st diff. | -0.215** | -3.602** | 0.047 | -13.29*** | -14.79*** | -16.23*** | -11.85*** |
| | Levels | 0.992 | -2.593 | 0.104 | -5.569*** | -5.138*** | -5.200** | -5.160 |
| Honduras | 1 st diff. | -6.587*** | -6.614*** | 0.060 | -12.55*** | -11.39*** | -13.18*** | -11.24*** |
| | Levels | 1.426 | -3.832*** | 0.196** | -5.876*** | -5.044*** | -5.832*** | -7.287*** |
| Mexico | 1 st diff. | -0.208 | -1.463 | 0.086 | -9.491*** | -9.205*** | -10.91*** | -9.161*** |
| | Levels | 2.370 | -1.834 | 0.187** | -2.978 | -2.667 | -2.941 | -3.197 |
| Nicaragua | 1 st diff. | -1.234 | -9.641*** | 0.066 | -19.09*** | -18.32*** | -19.31*** | -18.09*** |
| | Levels | 2.725 | -0.642 | 0.261*** | -2.893 | -2.593 | -2.737 | -2.861 |
| Panama | 1 st diff. | -2.022* | -8.410*** | 0.064 | -10.91*** | -9.986*** | -10.82*** | -10.65*** |
| | Levels | 1.584 | -1.246 | 0.341*** | -4.121 | -3.763 | -4.173 | -3.027 |
| Paraguay | 1 st diff. | -0.992 | -2.565 | 0.178** | -6.756*** | -6.421*** | -8.045*** | -6.952*** |
| | Levels | 0.345 | -2.754 | 0.222*** | -5.201** | -5.401*** | -5.779*** | -4.301 |
| Peru | 1 st diff. | -3.310*** | -3.364** | 0.079 | -5.929*** | -5.750*** | -5.731*** | -5.550* |
| | Levels | 3.009 | -1.520 | 0.152** | -3.244 | -2.381 | -3.220 | -4.235 |
| Uruguay | 1 st diff. | -1.028 | -5.137*** | 0.065 | -12.31*** | -11.47*** | -13.53*** | -12.73*** |
| | Levels | 0.237 | -3.340** | 0.124* | -4.911** | -3.969 | -5.246** | -5.323* |
| Venezuela | 1 st diff. | -6.036*** | -5.966 | 0.03 | -7.594*** | -7.330*** | -8.021*** | -8.082*** |
| | Levels | 1.417 | -1.344 | 0.323*** | -3.518 | -4.623** | -4.665 | -4.070 |
| | 1 st diff. | -4.000*** | -8.450*** | 0.106 | -6.459*** | -6.372*** | -6.820*** | -7.929*** |

***, **, and *implies rejection at the 1%, 5%, and 10% levels respectively

Table A3: Break date for GDP series

| Country | Series | ZA | | | Chow test | P97 |
|-------------|-----------------------|--------------------|----------------|---------------|-----------|------|
| | | Break in intercept | Break in trend | Break in both | | |
| Argentina | Levels | 1981 | 1972 | 1981 | 1919* | 1984 |
| | 1 st diff. | 2003 | 1915 | 1918 | | 1904 |
| Bolivia | Levels | 1950 | 1958 | 1950 | 1936 | |
| | 1 st diff. | 1978 | 1986 | 1979 | | 1966 |
| Brazil | Levels | 1957 | 1981 | 1968 | 1981 | 1975 |
| | 1 st diff. | 1981 | 1970 | 1981 | | 1975 |
| Chile | Levels | 1930 | 1983 | 1930 | 1933 | 1928 |
| | 1 st diff. | 1914 | 1915 | 1933 | | 1930 |
| Colombia | Levels | 1996 | 1979 | 1970 | 1932* | 1966 |
| | 1 st diff. | 1979 | 1909 | 1929 | | 1933 |
| Costa Rica | Levels | 1958 | 1978 | 1958 | 1945 | 1980 |
| | 1 st diff. | 1945 | 1954 | 1946 | | 1930 |
| Cuba | Levels | 1991 | 1979 | 1991 | 1990 | 1988 |
| | 1 st diff. | 1995 | 1994 | 1990 | | 1929 |
| Dom. Rep. | Levels | 1970 | 1974 | 1970 | 1966* | 1967 |
| | 1 st diff. | 1978 | 1991 | 1977 | | 1963 |
| Ecuador | Levels | 1946 | 1986 | 1946 | 1948 | 1944 |
| | 1 st diff. | 1980 | 1949 | 1943 | | 1943 |
| El Salvador | Levels | 1980 | 1971 | 1980 | 1935 | 1979 |
| | 1 st diff. | 1979 | 1949 | 1979 | | 1946 |
| Guatemala | Levels | 1963 | 1979 | 1968 | 1944* | 1969 |
| | 1 st diff. | 1981 | 1937 | 1941 | | 1941 |
| Haiti | Levels | 1992 | 1981 | 1976 | 1979 | 1972 |
| | 1 st diff. | 1981 | 1975 | 1981 | | 1978 |
| Honduras | Levels | 1932 | 1938 | 1932 | 1945 | 1998 |
| | 1 st diff. | 1945 | 1933 | 1938 | | 1928 |
| Mexico | Levels | 1954 | 1912 | 1908 | 1933 | 1994 |
| | 1 st diff. | 1933 | 1965 | 1933 | | 1933 |
| Nicaragua | Levels | 1979 | 1968 | 1979 | 1939 | 1960 |

(Contd...)

Table A3: (Continued)

| Country | Series | ZA | | | Chow test | P97 |
|-----------|-----------------------|--------------------|----------------|---------------|-----------|------|
| | | Break in intercept | Break in trend | Break in both | | |
| Panama | 1 st diff. | 1978 | 1951 | 1978 | 1982* | 1975 |
| | Levels | 1916 | 1931 | 1960 | | 1944 |
| Paraguay | 1 st diff. | 1952 | 1917 | 1952 | 1982 | 1946 |
| | Levels | 1973 | 1989 | 1974 | | 1975 |
| Peru | 1 st diff. | 1982 | 1975 | 1982 | 1931* | 1947 |
| | Levels | 1988 | 1971 | 1988 | | 1958 |
| Uruguay | 1 st diff. | 1993 | 1991 | 1988 | 1922 | 1979 |
| | Levels | 1944 | 1955 | 1949 | | 1965 |
| Venezuela | 1 st diff. | 1955 | 2004 | 2001 | 1943 | 1929 |
| | Levels | 1943 | 1970 | 1945 | | 1949 |
| | 1 st diff. | 1933 | 1947 | 1943 | | 1904 |

Table A4: Break date for energy consumption series

| Country | Series | ZA | | | Chow test | P97 |
|-------------|-----------------------|--------------------|----------------|---------------|-----------|------|
| | | Break in intercept | Break in trend | Break in both | | |
| Argentina | Levels | 1990 | 1976 | 1969 | 1919 | 1983 |
| | 1 st diff. | 1919 | 1915 | 1919 | | 1915 |
| Bolivia | Levels | 1983 | 1977 | 1938 | 1937 | 1969 |
| | 1 st diff. | 1937 | 1939 | 1937 | | 1934 |
| Brazil | Levels | 1914 | 1916 | 1914 | 1945 | 1912 |
| | 1 st diff. | 1945 | 1961 | 1945 | | 1913 |
| Chile | Levels | 1917 | 1933 | 1930 | 1935 | 1926 |
| | 1 st diff. | 1914 | 1916 | 1923 | | 1930 |
| Colombia | Levels | 1921 | 1955 | 1953 | 1921 | 1962 |
| | 1 st diff. | 1909 | 1910 | 1927 | | 1906 |
| Costa Rica | Levels | 1963 | 1978 | 1944 | 1941 | 1927 |
| | 1 st diff. | 1936 | 1926 | 1926 | | 1924 |
| Cuba | Levels | 1957 | 1981 | 1957 | 1943 | 1953 |
| | 1 st diff. | 1943 | 1927 | 1934 | | 1937 |
| Dom. Rep. | Levels | 1968 | 1975 | 1968 | 1968 | 1966 |
| | 1 st diff. | 1968 | 1999 | 1962 | | 1973 |
| Ecuador | Levels | 1993 | 1983 | 1976 | 1920 | 1993 |
| | 1 st diff. | 1913 | 1915 | 1922 | | 1909 |
| El Salvador | Levels | 1948 | 1977 | 1946 | 1946 | 1973 |
| | 1 st diff. | 1930 | 1932 | 1930 | | 1927 |
| Guatemala | Levels | 1982 | 1966 | 1981 | 1936 | 1929 |
| | 1 st diff. | 1934 | 1925 | 1925 | | 1928 |
| Haiti | Levels | 1950 | 1955 | 1950 | 1995 | 1957 |
| | 1 st diff. | 1995 | 1960 | 1995 | | 1953 |
| Honduras | Levels | 1940 | 1945 | 1940 | 1948 | 1941 |
| | 1 st diff. | 1926 | 1928 | 1931 | | 1943 |
| Mexico | Levels | 1912 | 1914 | 1912 | 1924 | 1995 |
| | 1 st diff. | 1933 | 1974 | 1933 | | 1909 |
| Nicaragua | Levels | 1950 | 1972 | 1949 | 1943 | 1961 |
| | 1 st diff. | 1949 | 1956 | 1949 | | 1977 |
| Panama | Levels | 1934 | 1972 | 1939 | 1923 | 1968 |
| | 1 st diff. | 1974 | 1940 | 1920 | | 1917 |
| Paraguay | Levels | 1954 | 1960 | 1954 | 1955* | 1950 |
| | 1 st diff. | 1945 | 1947 | 1945 | | 1948 |
| Peru | Levels | 1946 | 1967 | 1946 | 1934 | 1941 |
| | 1 st diff. | 1909 | 1916 | 1909 | | 1932 |
| Uruguay | Levels | 1951 | 1917 | 1945 | 1945 | 1943 |
| | 1 st diff. | 1945 | 1915 | 1918 | | 1914 |
| Venezuela | Levels | 1926 | 1964 | 1948 | 1924* | 1947 |
| | 1 st diff. | 1926 | 1927 | 1930 | | 1927 |